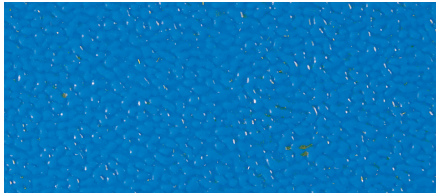


FINISHES



STIPPLED FINISH PRODUCTS

Protection Rails, Guardian Handrail, Standard Corner Protection Angle, Ultra Corner Protection Angle are all available in the On Trend and Premier Colour Range.

Ellipse Protection Rail, Contour Hand/Crash Rail, Oval Handrail are available in a more limited colour range, please refer to the individual product pages on our website for specific colours.



FALMOUTH FINISH PRODUCTS

Wall & Door Protection Panels, Protection Strip, Door Edge Protectors, Glazing Beads, Formed Frame & Architraves, Formed Angles.

All supplied in the On Trend and Premier Colour range.

COLOUR MATCHING

Matching of colours is possible but is subject to a minimum order quantity with a possible additional set up charge.

GOOD TO KNOW

The manufacturing process of **Yeoman Shield** products (either extrusion or injection moulding) offer a superior stability on colour matching.

These materials are UV stabilised to reduce the effect of fading when exposed to direct sunlight.

PRODUCT COLOUR INFORMATION

A Perfect Finish

Products with a Stippled finish, such as Protection Rails, Guardian Handrail, Contour Handrail and Oval Handrail, along with Standard and Ultra Corner Protection Angles are available in the On Trend and Premier Colour range, please refer to product pages in our brochure for specific colours.

Wall & Door Protection Panels, Door Edge Protectors, Glazing Beads, Formed Architrave Protectors and Angles are all supplied in Falmouth finish in the On Trend and Premier Colour range.

Items such as Skirting, Extruded Door Architrave/ Frame Protection, Wall Cladding and Corner Trims have a Smooth finish and are only available in certain colours please refer to our Sales Office for advice.

Free Samples to help you Choose

Due to the printing process of the chart, please be aware that the colours shown are for identification purposes only.

We advise, that for precise colour options, a sample piece of the desired product is requested from our office.

BS and RAL colour references are stated, or the nearest colour reference given where possible.

Request a sample by emailing info@yeomanshield.com or go to our website.

Happy to Help

For all queries on Yeoman Shield colours and finishes please contact our Sales Office on 0113 279 5854 or email info@yeomanshield.com, where someone will be 'happy to help'

Design your own colour scheme - use our interactive Colour Picker



SUGGESTIONS FOR DEMENTIA FRIENDLY ENVIRONMENTS

Colour and contrast can be used in design schemes to help people with dementia identify key features and rooms.

Light reflectance values can assist with choosing the right contrasting colours for a design scheme.

Coloured Doors

Having doors, such as bedroom and bathrooms, finished in different colours can help a service user identify important rooms.

Contrasting Key Features

Using a contrasting colour to the background can make key features such as railings and handrails easier to locate.

Utilising a different colour for doorways to that of the walls makes it easier for people to use.

A distinguishing change in colour to highlight hazards such as corners and changes in direction in corridors draws attention to danger that they may pose.

The above are only suggestions, here is a link to useful information.



The colour range for Yeoman Shield's products span 35 different shades across the spectrum.



ON TREND RANGE

Light Grey RAL/BS No BS 00 A 01 LRV* 57	Mid Grey RAL/BS No BS 00 A 05 LRV* 37	Dark Grey RAL/BS No RAL 7015 LRV* 12	Dusty Grey RAL/BS No RAL 7037 LRV* 26	Graphite RAL/BS No RAL 7046 (nearest) LRV* 21	White RAL/BS No RAL 9016 LRV* 86
--	--	---	--	--	---

Yeoman Shield On Trend and Premier colour ranges are held in stock for quick delivery.

PREMIER COLOUR RANGE

<div>Heather</div> <div>RAL/BS NoRAL 5002</div> <div>LRV*23</div>	<div>Amethyst</div> <div>RAL/BS NoRAL 4012 (nearest)</div> <div>LRV*17</div>	<div>Lilac</div> <div>RAL/BS NoRAL 4001</div> <div>LRV*19</div>	<div>Aubergine</div> <div>RAL/BS NoBS 24 C 39 (nearest)</div> <div>LRV*7</div>	<div>Steel Blue</div> <div>RAL/BS NoRAL 5011</div> <div>LRV*6</div>	<div>Trafalgar Blue</div> <div>RAL/BS NoRAL 5000 (nearest)</div> <div>LRV*11</div>
<div>Dark Blue</div> <div>RAL/BS NoRAL 5002</div> <div>LRV*8</div>	<div>Royal Blue</div> <div>RAL/BS NoRAL 5017 (nearest)</div> <div>LRV*11</div>	<div>Regatta Blue</div> <div>RAL/BS NoBS 18 E 53</div> <div>LRV*15</div>	<div>Cornflower Blue</div> <div>RAL/BS NoRAL 5012 (nearest)</div> <div>LRV*19</div>	<div>Pastel Blue</div> <div>RAL/BS NoRAL 5024</div> <div>LRV*20</div>	<div>Powder Blue</div> <div>RAL/BS NoBS 20 C 33</div> <div>LRV*55</div>
<div>Pigeon Blue</div> <div>RAL/BS NoBS 18 C 35</div> <div>LRV*45</div>	<div>Sky Blue</div> <div>RAL/BS No</div> <div>LRV*60</div>	<div>Light Green</div> <div>RAL/BS NoRAL 6027</div> <div>LRV*43</div>	<div>Aqua Blue</div> <div>RAL/BS NoRAL 5018</div> <div>LRV*26</div>	<div>Green</div> <div>RAL/BS NoBS 14 E 53</div> <div>LRV*17</div>	<div>Opal Green</div> <div>RAL/BS NoRAL 6004</div> <div>LRV*8</div>
<div>Pastel Green</div> <div>RAL/BS NoRAL 6019</div> <div>LRV*49</div>	<div>Sage Green</div> <div>RAL/BS NoBS 14 C 35 (nearest)</div> <div>LRV*39</div>	<div>Brown</div> <div>RAL/BS NoBS 08 B 29</div> <div>LRV*7</div>	<div>Mushroom</div> <div>RAL/BS NoBS 08 B 17</div> <div>LRV*51</div>	<div>REFERENCES/NUMBERS EXPLAINED</div> <div>RAL: Colour matching system which defines colours for paints, coatings and plastics.</div> <div>BS: British Standard specifying the colours of paint for building and construction works.</div> <div>*LRV: Light Reflectance Value which is a measure of visible, usable light that is reflected from a surface when illuminated by a light source.</div> <div>The scale used is from 0 (Black) to 100 (White).</div>	
<div>Buff</div> <div>RAL/BS NoRAL 6019</div> <div>LRV*36</div>	<div>Mocha</div> <div>RAL/BS NoBS 08 B 21 (nearest)</div> <div>LRV*24</div>	<div>Cream</div> <div>RAL/BS NoBS 10 B 15</div> <div>LRV*79</div>	<div>Red</div> <div>RAL/BS NoBS 04 E 53</div> <div>LRV*15</div>		
<div>Yellow</div> <div>RAL/BS NoBS 08 E 51</div> <div>LRV*51</div>	<div>Grapefruit</div> <div>RAL/BS NoBS 10 E 50</div> <div>LRV*72</div>	<div>Black</div> <div>RAL/BS NoBS 00 E 53</div> <div>LRV*4</div>			