

# PREMIER PROTECTION RAILS FIXING INSTRUCTIONS



**Yeoman Shield products should be installed in accordance with the following manufacturers recommended instructions.**

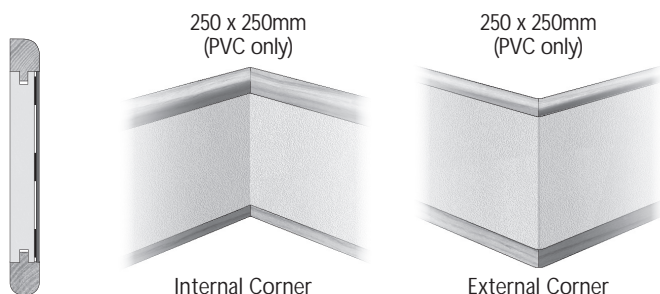
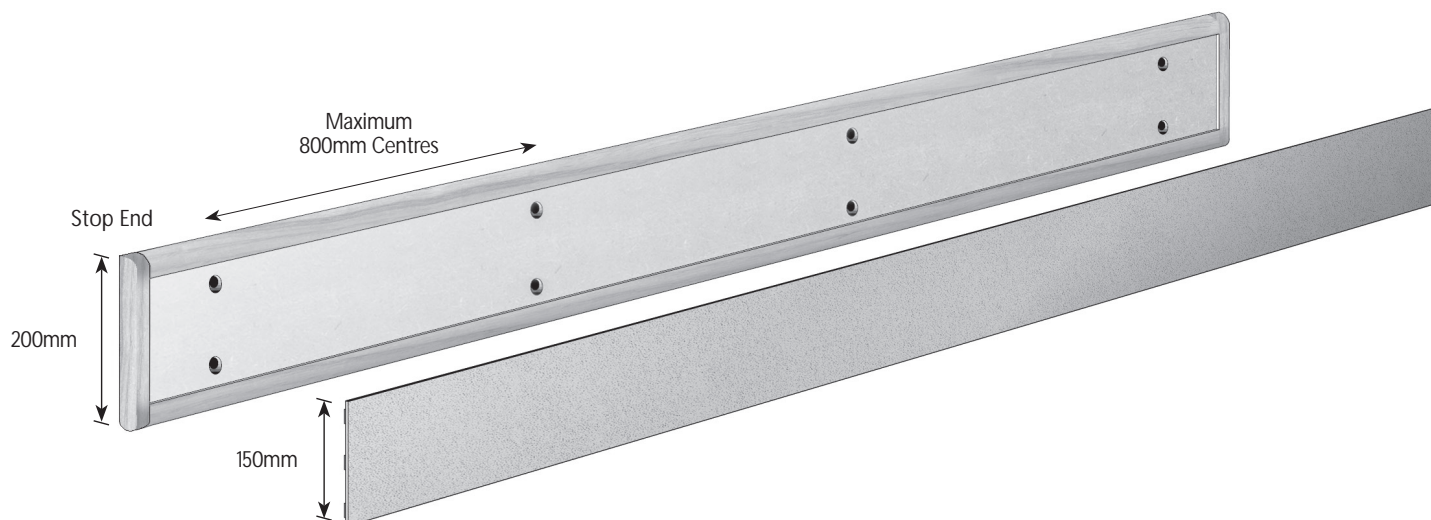
Premier Protection Rail, solid core edged with Ash hardwood trims and stop ends complete with mitred external, internal or special corners. (200mm wide version shown, other widths available same fixing information.)

If supplied in full lengths, 2,440mm, with stop ends loose, then the materials should be cut to length, allowing for any accessories, mitred if necessary and finished, i.e. varnished, prior to the installation.

Mark the pre-determined height of the rail on the surface to be protected, preferably using a laser level.

Secure the backing rail to the substrate at maximum 800mm centres. Where mitred external or internal corners have been ordered, manufactured and supplied then the backing rail should be fixed into position first, before the full or cut lengths. Using the appropriate fixings as suggested in the table below.

Once the backing rail has been secured to the wall substrate secure fit the Vinylac insert into place. Fix all external or internal corners first, which are supplied with 250 x 250mm legs, then measure and cut to length where necessary using a fine tooth Tenon saw or electric drop saw with a fine tooth blade, ensuring that all ends are cut square, and fix using double sided tape. Position joints in the insert away from joints in the rail.



Wall Structure	Screw	Plug
Plasterboard	Appropriate length 5mm machine screw	5mm Rubber Rawlnut
Brickwork, Breeze Blockwork, Concrete	Appropriate length No. 10 woodscrew	No. 10 Plastic plug
Lightweight Blockwork e.g. Thermalite, Siporex	Appropriate length No. 10 woodscrew	Fischer S8 Plastic plug
Steel	Self-tapper	-

N.B. Details on Expansion and Contraction, Glazed Areas, Cleaning, etc., are shown on the reverse of this document.

- f -

Š , ^ ^ %Š € £ €' Š , ^ Š  
€' , , Ÿ Ž " f, • " ~" , ^

Š f ' ^  
†... • • --- ^ •  
%Š Š Š ,  
> , , ^ <  
†... • • - • - € • • €€- ^ %  
%Š , ^ - ^ •  
€Š † €Š  
< • • • • • € € € • • € € †  
- • Ž † • • € € "  
• Ž € † • • € € • € • • € € - "  
" ○ ^ % ^ ^ †  
†... • • - • - ^ Ž † •  
†... • " • - • ^ •  
Ž Ž • •  
Š ^ ~ % ^ ^  
... † † • • € € • ^ Ž † •  
†... • • - • - ^ Ž † •  
< , ' > % , Ÿ Ž , ^ Ÿ Ž  
, ' ^ Ž f " i ^ "  
%Š , ^ • %  
• % ' € % ^ €  
† f  
• , † • • • † Š " † • - < " " •  
•  
Š , ^ •  
•

"  
'  
Š - " € " "™  
" " " f ...- Š  
< •  
- •  
• • € • • - Ž • Ž † "  
' " - " € " , • ' €  
'™  
' f  
' •  
Ÿ •  
Š , ^ •  
™  
€ Š Ÿ ^  
€ € • ' Ž € □  
' " %  
%Š , ^ •  
• † , •  
• • • • •  
•  
•  
Ž , ' € ^ " €  
" " Š , ' , ' " >  
• •  
•

• •  
• • • • • • • - - €  
, f " • • • • • † †  
%Š , ^ ^  
•  
•  
Š , ^ < €  
Š , ^ Ž •  
•  
•  
•  
€  
• € f ,  
' ^ ^ %  
" " " • ' €  
" "™ Š , ^ ^  
" ,  
Š " - ' Š € " %™  
f " ... † "  
† f , Š • ^ Ž ^  
•  
•  
f Š , ^



All Š , ^ materials/  
products are sourced and  
manufactured in the United  
Kingdom.

Registered Office as above. Registered in England No. 2669275 VAT Reg No. GB 169 3105 61  
Directors: P.C.Brumwell (Chairman), S.L.Russell, G.C.Brumwell, P.Christopher, A.C.Brumwell, R.Good.  
Fl Mar 17